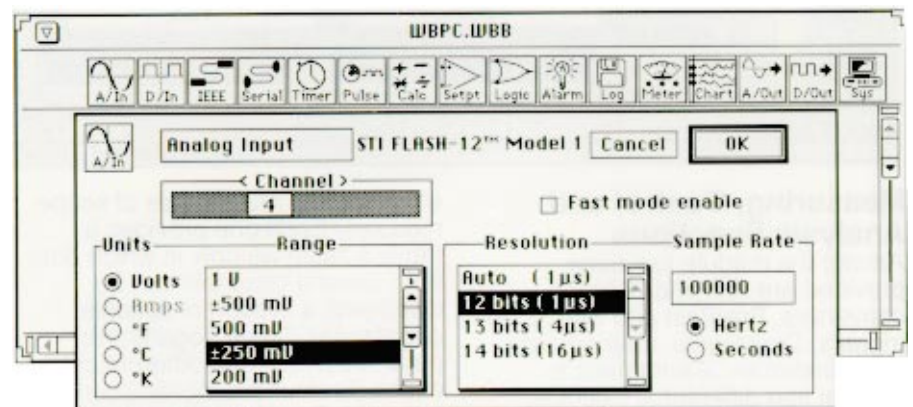
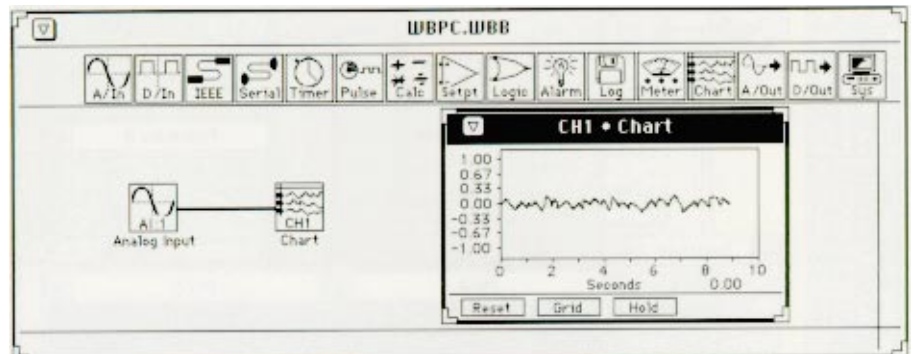


Work Bench PC

Icon-Based Acquisition and Control Program for DOS

\$995

- ✓ DOS Based
- ✓ Uses Icons and Pop-Up Menus for Truly Intuitive Operation
- ✓ Graphs Data in Real Time; Unlimited Number of Traces on One Graph
- ✓ Extensive Calculations Including Arithmetic, Trigonometric, Linear and Non-Linear Scaling, Integral Derivative, Running Average, Minimum, Maximum and More
- ✓ User-Programmable Functions – External Programs can be Linked to Appear as Additional Calculation Functions
- ✓ Supports IEEE-488 Hardware
- ✓ Performs Simulations on Demand
- ✓ Continues to Run While Configuration is Changed
- ✓ Automatic Start of Operations from Power-On. Recovers from Power Failures or When First Started, and Starts Operating with the Setup You Choose
- ✓ Simple Setup and Operation; No Programming



HARDWARE REQUIREMENTS:

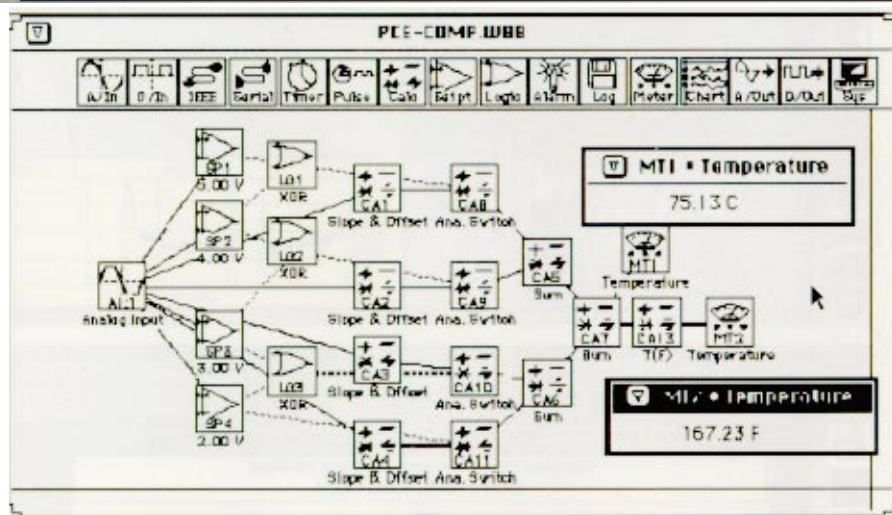
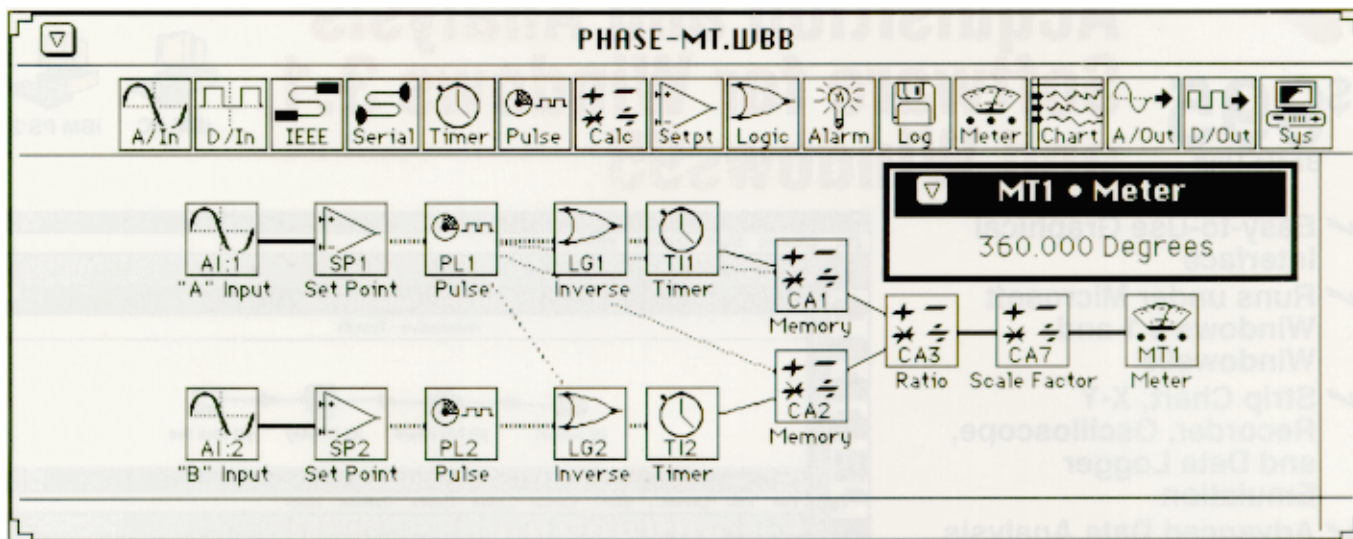
- IBM PC, AT or compatible with 640K RAM
- 360 KBytes 5¼ and one hard disk
- Hercules, EGA, VGA or compatible graphics adapter (display is in black and white)
- Microsoft compatible mouse
- Data acquisition cards

The WorkBench PC data acquisition and control program for IBM computers offers an intuitive, objective-oriented environment. Use the 14 icons and interconnecting wires to program, measure and control temperature, pressure, flow and other analog and digital inputs and outputs. Icons representing functions used in data acquisition and control can be selected and 'wired' together on the screen to create a symbolic representation of what will actually happen in the hardware of your application. Just as in a programming language, the capability is unlimited. Unlike a programming language, no training is required to interconnect the icons and create applications to suit specific needs.

WorkBench PC acquires analog or digital data from a variety of OMEGA IBM PC boards. Logged data is compatible with spreadsheets, graphics programs, and analysis software such as Lotus 1-2-3, Excel, or dBase III. The program also supports the IEEE-488 interface.



B



WorkBench PC acquires analog or digital data from a variety of OMEGA IBM PC boards. Logged data is compatible with spreadsheets, graphics programs and analysis software such as Lotus 1-2-3, or dBase III. The program also supports the IEEE-488 interface.

Specifications

HARDWARE SUPPORTED

Standard:

WB-AAI/ASC/AVO/DIO/FAI cards, WB-Dynares cards, WB-Workmate cards, WB-FLASH cards, OMB-PER-488 IEEE-488 cards, and DS-Data-Shuttle cards

Icon Types: Analog Input, Digital Input, IEEE-488, Timer, Pulse, Calculation, Setpoint, Logic, Alarm, Log, Meter, Chart, Analog Output, Digital Output

100 Icons in one setup with 640 KByte RAM

Number of analog I/O and digital I/O limited by the number of installed data acquisition cards

Maximum Rates (Normal Mode)

	25 MHz 386	8 MHz 286
Digital Inputs and Outputs	1000 Hz	200 Hz
Analog Inputs	500 Hz	150 Hz
Chart Update Rate	600 Hz	200 Hz
Log Rate, RAM Disk	250 Hz	50 Hz
No RAM Disk	150 Hz	100 Hz

To Order (*Specify Model Number*)

Model No.	Price	Description
SWD-WBPC-3.5	\$995	Workbench PC Software includes support for WB-AAI/ASC/AVO/DIO/FAI/DYNARES & OMB-PER-488 card

Ordering Example: SWD-WBPC-3.5 is a data acquisition and control program for IBM computers, \$995.